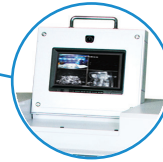


# OnSite

## Shred at the Source!



**Real-Time Monitoring & Recording:** Ensures integrity of the shredding process



**All-Metal Gears:** Heavy duty steel gears for high performance and minimal noise



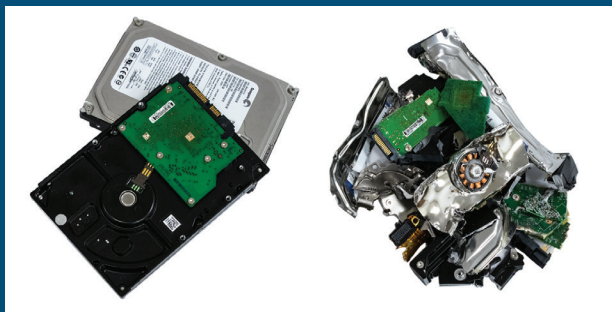
**LED Control Panel:** Easy to use with load indicator



**Separate Shredding Chambers:** Designed for continuous shredding of 3.5" HDDs and 2.5" HDD/SSDs

## FD 87HDS-R

HDD / SSD HARD DRIVE SHREDDER WITH RECORDING SYSTEM



3.5" HDD Hard Drives



2.5" HDD & SSD Hard Drives

Local Dealer:

# FORMAX®

[www.formax.com](http://www.formax.com)

## Physically Destroying Hard Drives is the Best Way to Keep Data Secure

The Formax **FD 87HDS-R HDD / SSD Hard Drive Shredder** provides the best level of security by physically destroying discarded hard drives. For optimal security and accountability, the FD 87HDS-R features a **Recording System with internal and external cameras** to monitor and document their destruction. **Separate shredding chambers** sized for 3.5" HDD and 2.5" SSD & HDD drives have sliding **metal shields for safety** and are designed for **continuous operation**. Its **chain-driven AC-gear motor** is housed in a **solid-metal cabinet with casters** for mobility and is engineered for low operational noise. Combining safety, durability, and an extra level of security, FD 87HDS-R is the best choice to protect your digital data.



**User-Friendly Control Panel**  
Door Open Sensor, Reverse,  
Waste Bin Full Indicator



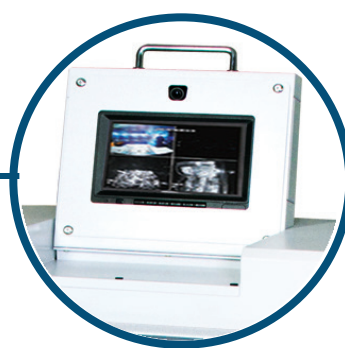
**Commercial Grade**  
SSDs and HDDs are no match  
for the solid-steel blades and  
rugged chain-driven motor



**Separate Shredding Chambers**  
Metal safety shields for safe,  
continuous operation,  
and individual LED counters



**Rugged Waste Bin**  
Durable molded plastic for  
convenient collection  
of shredded particles



**Recording System**  
Internal & external cameras  
monitor and document  
destruction on 64GB SD card

### OPERATING FEATURES

- Separate Shredding Chambers
- Shreds 3.5" HDD and 2.5" HDD and SSDs
- Designed for Continuous Operation
- Internal and External Recording System
- LED Control Panel
- Fully Enclosed Chambers for Safety
- Heat-Treated Steel Cutting Blades
- Heavy Duty Chain-Driven AC-Geared Motor
- Resettable LED Counters
- All Metal Cabinet with Casters
- Front Access Waste Bin
- Large Emergency Stop Button
- Thermal Overload Protection
- Safety Key Lock

### SUPPLIES

Cutting Head Lubricating Oil:  
#8000-10, six 8-ounce bottles

### WARRANTY

Cutting Head: 1 year warranty (parts only)  
All other parts: 1 year warranty

### SPECIFICATIONS

Infeed Opening for 3.5" HDD	4.72" (120mm)
Infeed for 2.5" HDD & SSD	3.54" (90mm)
Shred Particle Size for 3.5" HDD	1.6" (40mm) x random
Shred Particle Size for 2.5" HDD & SSD	.19" (5mm) x random
Infeed Capacity	Continuous, 1 drive at a time
Speed *	3-4 drives per minute
Dimensions	24" W x 34" D x 51" H (600 x 850 x 1290mm)
Security Level	H-4 (DIN 66399 Standard)
Weight	1,146 lbs (520kg)
Power	220V 20A 3-Phase NEMA Plug / Receptacle: L1520P / L1520R
Certifications	CSA approved

\* Shredding speed and particle size vary based on media type and size