

OnSite

Shred at the Source!



Chain-Driven AC Geared Motor: Powerful, durable and built to outlast the competition



All-Metal Gears: Heavy duty steel gears for high performance and minimal noise



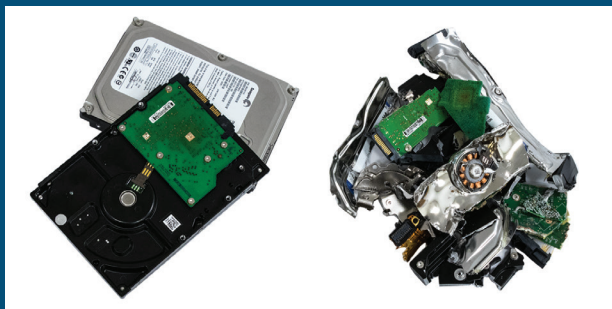
LED Control Panel: Easy to use with load indicator



Separate Shredding Chambers: Designed for continuous shredding of 3.5" HDDs and 2.5" HDD/SSDs

FD 87HDS

HDD / SSD HARD DRIVE SHREDDER



3.5" HDD Hard Drives



2.5" HDD & SSD Hard Drives

Local Dealer:

FORMAX[®]
www.formax.com

Physically Destroying Hard Drives is the Best Way to Keep Data Secure

The Formax FD 87HDS HDD / SSD Hard Drive Shredder provides the best level of security by physically destroying discarded hard drives. **Separate shredding chambers** sized for 3.5" HDD and 2.5" SSD & HDD drives have sliding **metal shields for safety** and are designed for **continuous operation**. Its **chain-driven AC-gear motor** is housed in a solid-metal cabinet with casters for mobility and is engineered for low operational noise. Combining safety, durability, and an extra level of security, FD 87HDS is the best choice to protect your digital data.



User-Friendly Control Panel
Door Open Sensor, Reverse,
Waste Bin Full Indicator



Commercial Grade
SSDs and HDDs are no match
for the solid-steel blades and
rugged chain-driven motor



Separate Shredding Chambers
Metal safety shields for safe,
continuous operation,
and individual LED counters



Rugged Waste Bin
Durable molded plastic for
convenient collection
of shredded particles



Shreds Multiple Size Drives
Designed for shredding
3.5" desktop HDDs, and
2.5" laptop HDDs and SSDs

OPERATING FEATURES

- Separate Shredding Chambers
- Shreds 3.5" HDD and 2.5" HDD and SSDs
- Designed for Continuous Operation
- LED Control Panel
- Fully Enclosed Chambers for Safety
- Heat-Treated Steel Cutting Blades
- Heavy Duty Chain-Driven AC-Geared Motor
- Resettable LED Counters
- All Metal Cabinet with Casters
- Front Access Waste Bin
- Rugged Molded Plastic Waste Bin
- Large Emergency Stop Button
- Thermal Overload Protection
- Safety Key Lock

SUPPLIES

Cutting Head Lubricating Oil:
#8000-10, six 8-ounce bottles per case

WARRANTY

Cutting Head: 1 year warranty (parts only)
All other parts: 1 year warranty

SPECIFICATIONS

| | |
|--|--|
| Feed Opening for 3.5" HDD | 4.72" (120mm) |
| Feed Opening for 2.5" HDD & SSD | 3.54" (90mm) |
| Shred Particle Size for 3.5" HDD | 1.6" (40mm) x random |
| Shred Particle Size for 2.5" HDD & SSD | .19" (5mm) x random |
| Infeed Capacity | Continuous, 1 drive at a time |
| Speed * | 3-4 drives per minute |
| Dimensions | 24" W x 34" D x 49.5" H (600 x 850 x 1258mm) |
| Security Level | H-4 (DIN 66399 Standard) |
| Weight | 1,102 lbs (500kg) |
| Power | 220V 20A 3-Phase NEMA Plug / Receptacle: L1520P / L1520R |
| Certifications | CSA approved |

* Shredding speed and particle size vary based on media type and size